

Plot 6 GF



Plot 6 GF

- Magnificent new build detached residence
- Ecclesbourne School catchment area
- Stunning Living Kitchen Diner
- Branded appliances
- Granite work surfaces and boiling tap
- Four double bedrooms, two en-suite
- South facing garden with sun terrace
- Carpets included
- Ten year Premier Warranty

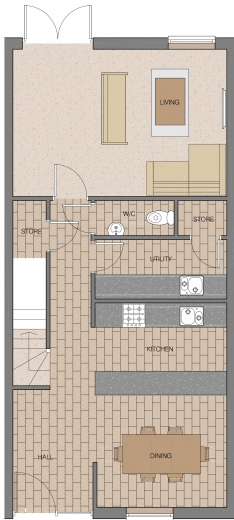
Built to the usual high standards for which Chevin Homes are renowned, this stylish property will comprise - Reception Hallway with guests cloakroom, stylish property will comprise - Reception Hallway with guests cloakroom, spacious lounge with aspects to both the front and rear, simply stunning living dining kitchen with granite work surfaces, boiling tap, integrated branded appliances and wine fridge. There is also a useful utility room. To the first floor are four double bedrooms, two en-suites and a family bathroom. The property also benefits from a garage.

Outside, Oak House enjoys a South facing garden to the rear with

a sunterrace which wraps around the rear and is accessed via both the lounge and the living dining kitchen.

Situated withing walking distance of all of the well renowned village schools, along with a wide range of amenities in the village including shops, schools, doctors, pharmacy, village inns, restaurants and a wide range of leisure facilities including squash and tennis clubs, cricket and golf clubs.

Duffield is situated onthe A6 approximately five miles North of Derby City centre and the nearbyA38 (approximately two miles) provides swift onwards travel to the Northand South, other nearby region centres and the main motorway network.



Plot 6 GF

Price: £695000

Coming soon

Coming soon